

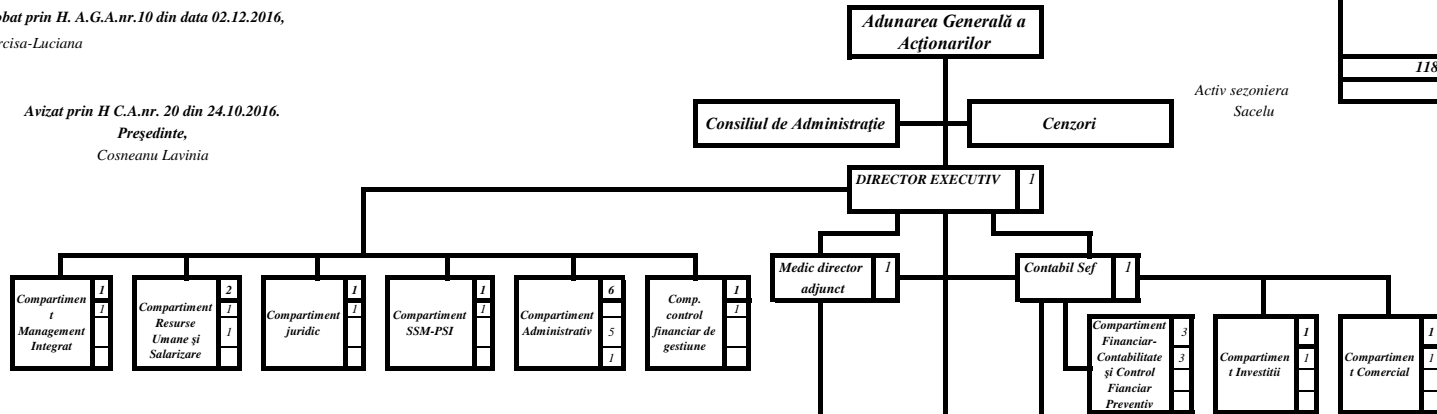
S. MEDSERV MIN S.A. TG-JIU
Valabilă începând cu data de 02.12.2016

Aprobat prin H. A.G.A.nr.10 din data 02.12.2016,
Jr. TURONY Narcisca-Luciana

Avizat prin H C.A.nr. 20 din 24.10.2016.
Președinte,
Cosneanu Lavinia

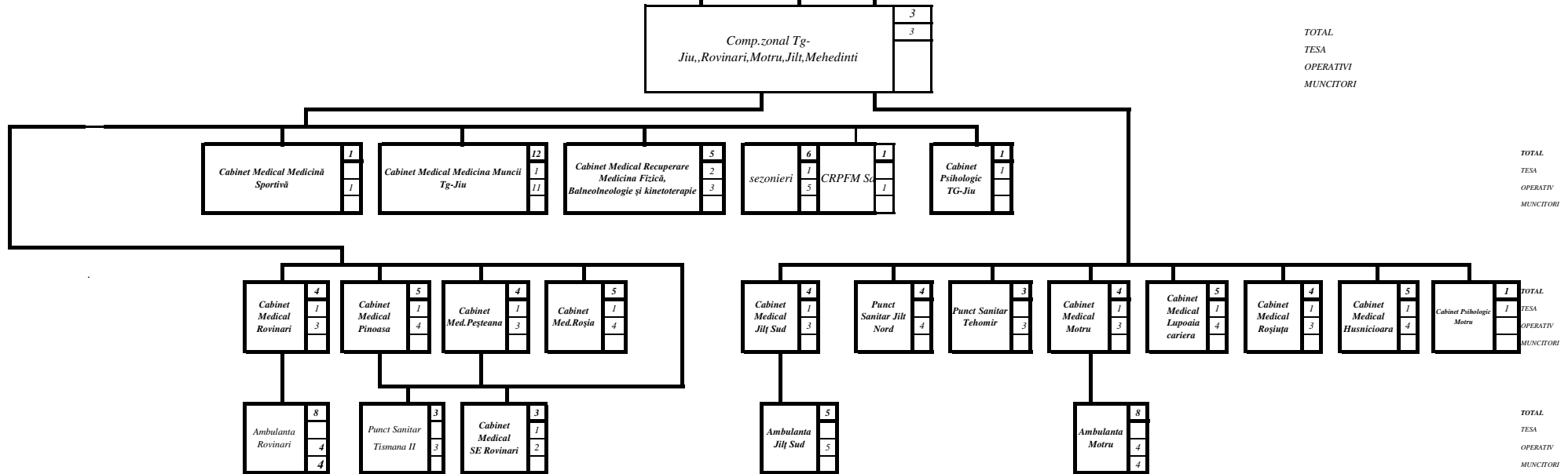
| Total personal | TESA | | | | | Operativi | | | Muncitori |
|----------------|-------|-----------|-------|-----------|----------|-----------|-----------|-----------------|-----------|
| | TOTAL | din care | | | | TOTAL | din care | | |
| | | conducere | total | ap. medic | ap. serv | | ap. medic | aparat serviciu | |
| 118 | 31 | 3 | 28 | 10 | 18 | 78 | 6 | 72 | 9 |
| | 6 | | | | 1 | 5 | | 5 | |

APARAT FUNCTIONAL



TOTAL
TESA
OPERATIVI
MUNCITORI

APARAT DE SERVICIU



TOTAL
TESA
OPERATIVI
MUNCITORI

TOTAL
TESA
OPERATIVI
MUNCITORI

TOTAL
TESA
OPERATIVI
MUNCITORI

DIRECTOR EXECUTIV
EC.POP GAVRILA

Comp.RUS,
Aleșu Anisa